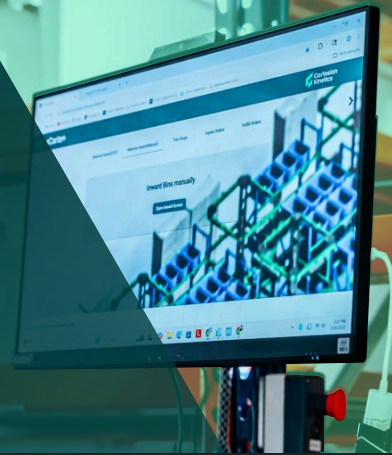


# Back-of-Operations Automation for Fulfillment and Logistics

How Cartesian Kinetics automates critical fulfillment and support zones without expanding footprint



## The Back-of-Operations Challenge

Back-of-store areas support critical work behind primary operations. Yet they are often tucked away, space-constrained, and expected to absorb variability without disrupting core workflows.

These zones support fast-pick SKUs, overflow inventory, kitting, returns, and staging. But limited space and active operations keep processes manual, making it harder to maintain speed and consistency as volumes grow.

## The Carte+ Solution by Cartesian Kinetics

Omni Rack Robotics designed for dense, non-customer-facing environments



### Small-Footprint Automation

Delivers high throughput within compact, secondary zones.



### Back-of-Operations Ready

Built to operate behind primary workflows without disrupting active operations.



### Uses Existing Racking

Runs directly on current rack structures without reconfiguring storage.



### No Floor Prep

Installs without heavy construction, floor modifications, or permitting delays.



### Fast Deployment

Designed to go live in as early as six weeks.



### Low Touch Integration

Connects smoothly with existing WMS, WES, or ERP workflows.

## Case Study Performance

Deployed in an active retail back-of-store environment supporting ecommerce fulfillment and staging behind in-store operations.

**85%**

Manual labor reduction

**65%**

Projected annual cost savings

**~1.5 years**

ROI achieved

**1,100 units/hr**

Throughput

**2,100**

SKUs supported

**4,410 sq ft**

System footprint

**16**

Robots deployed

**Zero downtime**

ROI achieved. No operational disruption during deployment.

## Why It Matters

Back-of-operations zones quietly determine overall performance. When these areas slow down, core operations feel the impact.

Cartesian Kinetics enables teams to automate secondary zones and relieve pressure on primary workflows. The result: greater value from existing space without expanding facilities or causing disruption.

## Ready to Automate Your Back-of-Store?

See how Carte+ brings high-throughput automation to space-constrained support environments.

[Explore Back-of-Store Automation](#)